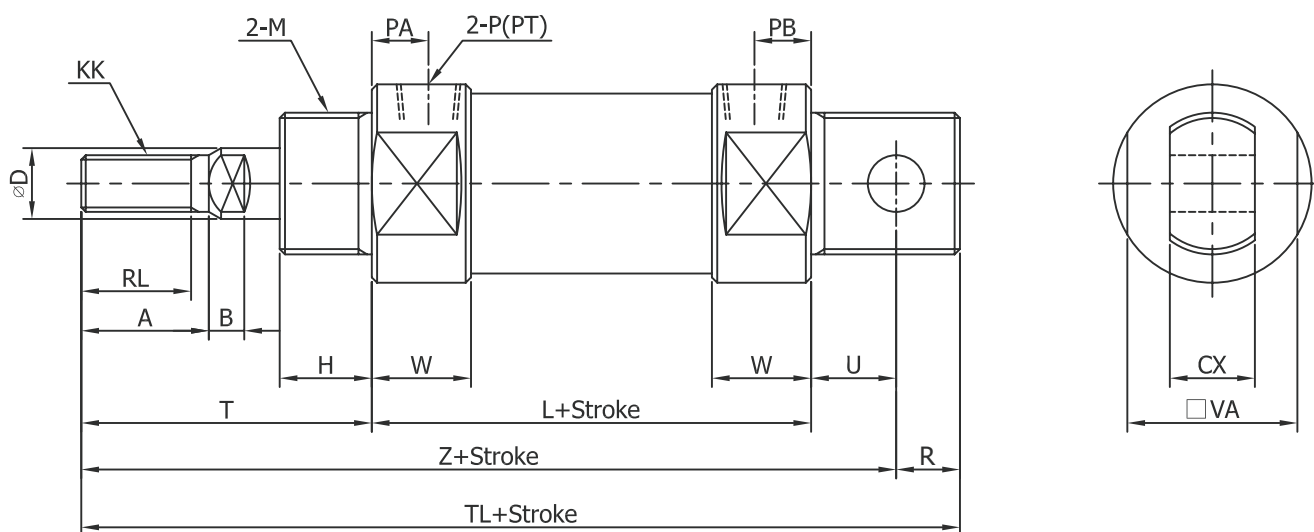
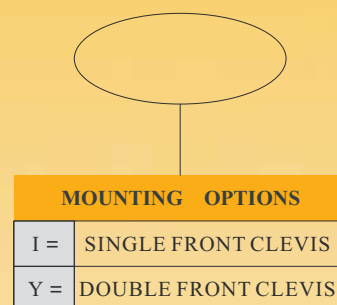
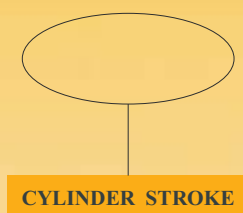
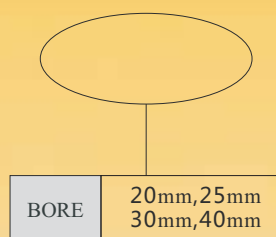


TAN AIR

TPCM2E SERIES CYLINDER

HOW TO ORDER

TPCM2E



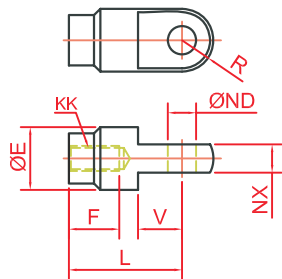
I-D(mm)	Stroke Range	RL	A	D	H	PA	PB	R	B	KK
20	~300	15.5	18	10	13	8	8	9	5.0	M8*1.25
25	~300	19.5	22	12	13	8	8	9	5.5	M10*1.25
32	~300	19.5	22	12	13	8	8	12	5.5	M10*1.25
40	~300	21.5	24	16	16	11	11	12	7.5	M14*1.5

I-D(mm)	W	CD	CX	M	P(PT)	L	T	TL	U	VA	Z
20	14	8	12	M20*1.5	1/8	62	41	124	12	24	115
25	14	8	12	M26*1.5	1/8	62	45	128	12	30	119
30	15	10	20	M26*1.5	1/8	64	45	136	15	34.5	124
40	21	10	20	M32*2.0	1/4	68	50	165	15	42.5	153

TANAIR

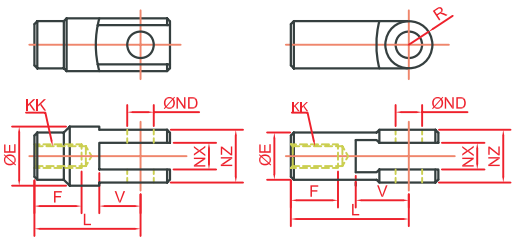
TPCM2E MOUNTING OPTIONS

I TYPE SINGLE FRONT CLEVIS



I-D	F	E	L	KK	R	V	ND	NX
20	16	20	36	M8*1.25	10	14	9	9
25,30	18	20	38	M10*1.25	10	14	9	9
40	22	24	55	M14*1.5	20	15.5	12	16

Y TYPE DOUBLE FRONT CLEVIS



I-D	F	E	L	KK	R	V	ND	NX	NZ
20	16	20	36	M8*1.25	12	14	9	9	18
25,30	18	20	38	M10*1.25	12	14	9	9	18
40	22	24	55	M14*1.5	13	25	12	16	38