

TAN AIR

TPCDQ2(MAGNETIC) CYLINDER PARTS ORDERING GUIDE

ORDERING GUIDE

HOW TO ORDER

TPCDQ2

BASIC - No Mount

B - FOOT Mount

A - TAPPED MOUNTING HOLES

*W - THROUGH ROD TYPE

*SJ - STROKE ADJUSTABLE TYPE

*TS - BACK TO BACK TYPE

N - NON LUBE TYPE
STANDARD

H - HYDRAULIC TYPE

BORE

12mm,16mm

20mm,25mm

32mm,40mm

50mm,63mm

80mm,100mm

STROKE

PISTON ROD
THREAD OPTIONS

Blank:Female Thread

M:Male Thread

REED SWITCH OPTION

D-80KL :2 Wire Type
Contact Eastern Pneumatics+Hydraulics
For Other Reed Switch Options
Note If 2 Reed Switches Are Required:D-80KL 2

NOTE

1.FOR DIMENSIONS SEE STANDARD
DIMENSIONS PDF

2.FOR *TYPE DIMENSIONS SEE NON STANDARD PDF

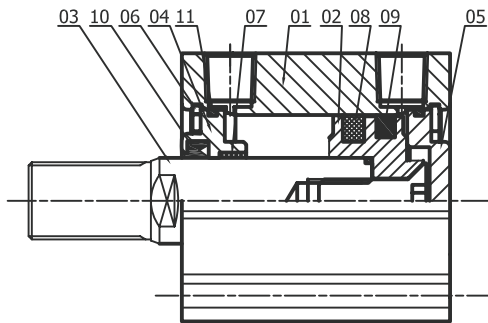
3.FOR ANY OPTIONS NOT LISTED CONTACT TAN AIR

4*SEE DIMENSIONS PDF FOR NON
STANDARD DIMENSIONS

TAN AIR

TPCDQ2(MAGNETIC) CYLINDER

PARTS LIST



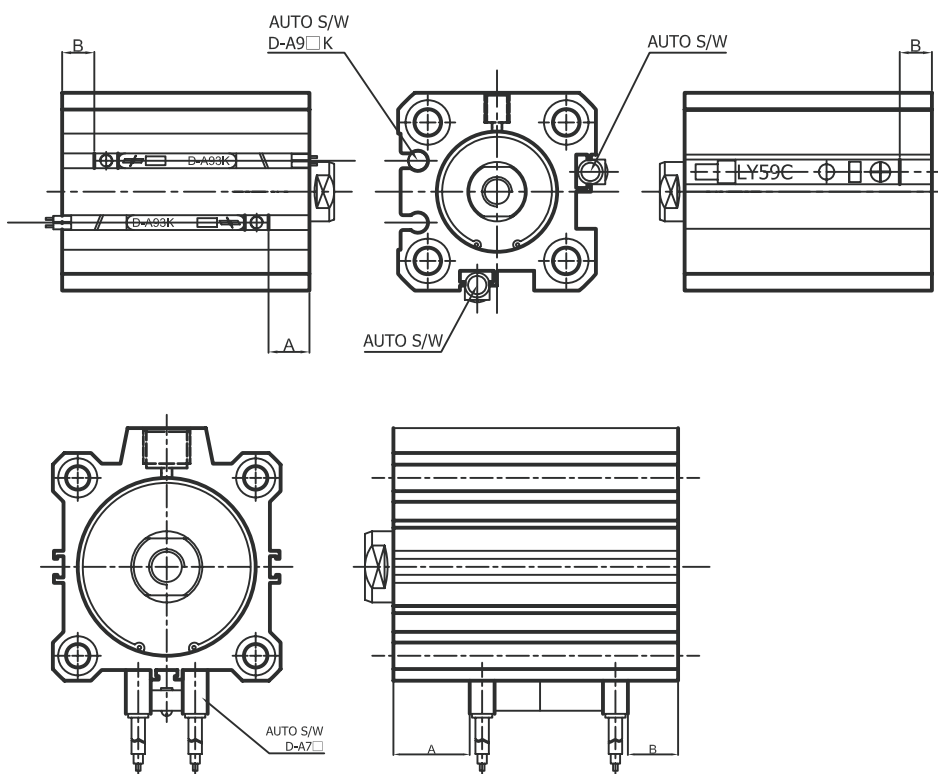
PARTS LIST

NUM	NAME	MATERIAL	REMARKS
1	TUBE	A6063	
2	PISTON	A2024	
3	ROD	S45C	
4	ROD COVER	A2024	
5	HEAD COVER	A6063	
6	SNAP-RING	SWP	
7	OILLESS	CU+OIL	Φ20~ Φ100

PACKING LIST

NUM	NAME	MATERIAL	INSIDE DIAMETER OF TUBE									
			Φ12	Φ16	Φ20	Φ25	Φ32	Φ40	Φ50	Φ63	Φ80	Φ100
8	Magnet	NBR	Φ12	Φ16	Φ20	Φ25	Φ32	Φ40	Φ50	Φ63	Φ80	Φ100
9	Piston Packing	NBR	OPA12	OPA16	OPA20	OPA25	OPA32	OPA40	OPA50	OPA63	OPA80	OPA100
10	Rod Packing	NBR	DYR 6K	DYR 6K	DYR 10K	DYR 12	DYR 16	DYR 16	DYR 20	DYR 20	DYR 25	DYR 30
11	Tube O Ring	NBR	S-10	S-14	S-18	S-22	S-29	S-35	S-40	S-60	S-75	S-90

SETTING POSITION OF AUTO SWITCH



SETTING POSTION

I-D	A	B
12	7.5	3
16	7.5	3
20	8	6.5
25	8	6.5
32	9.5	7
40	13.5	9.5
50	13.5	12.5
63	14	15.5
80	17	20
100	21.5	25