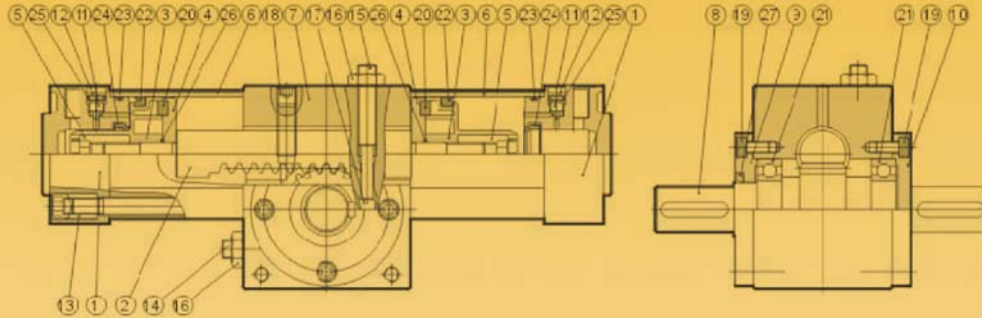


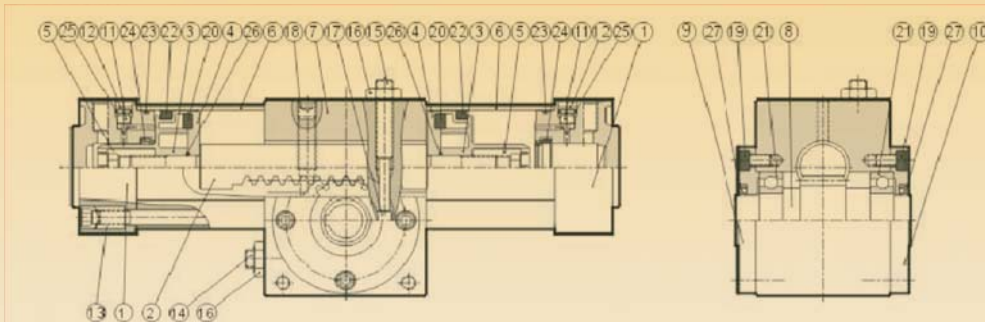
# TAN AIR

## ROTARY UNITS PARTS LIST

### ● PART LIST FOR RTH & RTHD



No	Name	Q' ty	No.	Name	Q' ty	No.	Name	Q' ty
1	End cap	2	10	End cover	1	19	Hexagon socket heed screw	8
2	Rack	1	11	Cushion needle	2	20	Magnet	2
3	Piston	2	12	Washer	2	21	Ball bearing	2
4	Magnet holder	2	13	Tie bolt	8	22	Piston packing	2
5	Piston nut	2	14	Adjusting screw	1	23	Cylinder gasket	2
6	Cylinder tube	2	15	Adjusting screw	1	24	Cushion packing	2
7	Housing	1	16	Lock nut	2	25	Needle gasket	2
8	Pinion shaft	1	17	Stopper pin	1	26	Piston gasket	2
9	End cover	1	18	Set screw	1	27	Rod packing	1



No	Name	Q' ty	No.	Name	Q' ty	No.	Name	Q' ty
1	End cap	2	10	End cover	1	19	Hexagon socket heed screw	8
2	Rack	1	11	Cushion needle	2	20	Magnet	2
3	Piston	2	12	Washer	2	21	Ball bearing	2
4	Magnet holder	2	13	Tie bolt	8	22	Piston packing	2
5	Piston nut	2	14	Adjusting screw	1	23	Cylinder gasket	2
6	Cylinder tube	2	15	Adjusting screw	1	24	Cushion packing	2
7	Housing	1	16	Lock nut	2	25	Needle gasket	2
8	Pinion shaft	1	17	Stopper pin	1	26	Piston gasket	2
9	End cover	1	18	Set screw	1	27	Rod packing	2

### ● ORDER CODE FOR RTH SEAL KIT

RTHSK40 suitable for RTH-Φ40  
 RTHSK63 suitable for RTH-Φ63  
 RTHSK80 suitable for RTH-Φ80

Seal kit including:  
 Piston packing X 2 pcs  
 Cylinder gasket X 2 pcs  
 Cushion packing X 2 pcs  
 Needle gasket X 2 pcs  
 Piston gasket X 2 pcs  
 Rod packing X 1 pcs

### ● ORDER CODE FOR RTF SEAL KIT

RTFSK40 suitable for RTF-Φ40  
 RTFSK63 suitable for RTF-Φ63  
 RTFSK80 suitable for RTF-Φ80

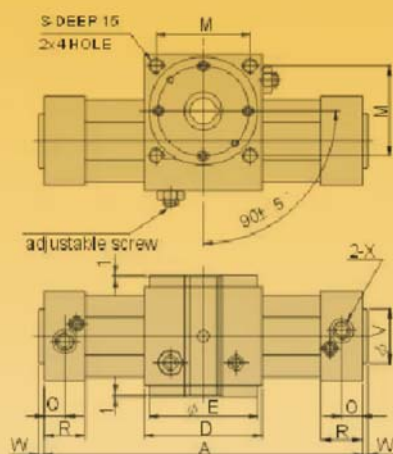
Seal kit including:  
 Piston packing X 2 pcs  
 Cylinder gasket X 2 pcs  
 Cushion packing X 2 pcs  
 Needle gasket X 2 pcs  
 Piston gasket X 2 pcs  
 Rod packing X 2 pcs

# TAN AIR

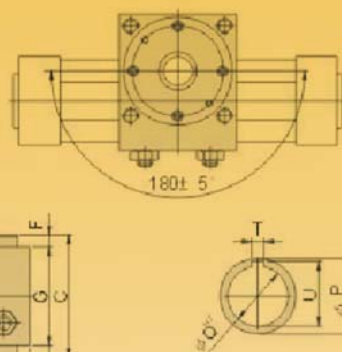
## ROTARY UNITS DIMENSIONS

### • DIMENSION-RTF

Angle of rotation 90°



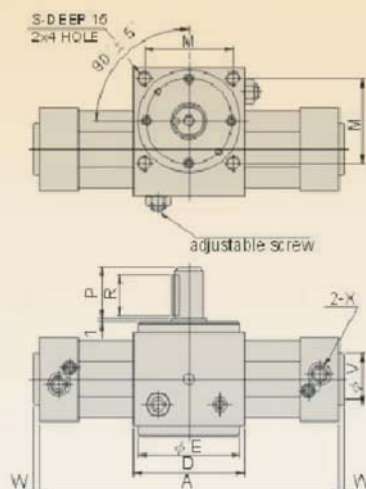
Angle of rotation 180°



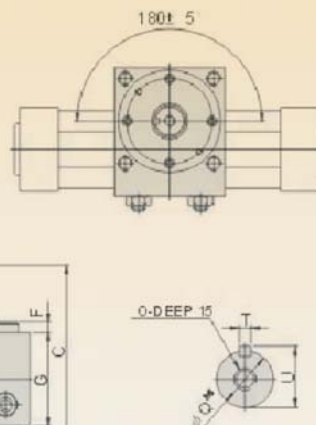
Type	A		C	D	E	F	G	H	J	K	L	M	N	O	P	Q	R	S	T	U	V	W	X	Z
	90	180																						
RTF40	263	326	81	75	72	8	65	53	37.5	93	27.5	60	38	15	25	14	30	M6	5	16.5	35	4	G1/4	M6
RTF63	306	377	95	90	82	10	75	75	42.5	110	30	70	56.5	16	30	19	32	M8	6	22	45	5	G3/8	M8
RTF80	343	428	119	105	96	12	95	95	51.5	135	36	82	72	19	35	24	38	M10	6	27.5	45	6	G3/8	M10

### • DIMENSION-RTH

Angle of rotation 90°



Angle of rotation 180°



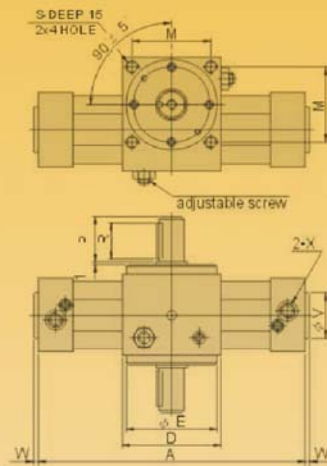
Type	A		C	D	E	F	G	H	J	K	L	M	N	O	P	Q	R	S	T	U	V	W	X	Z
	90	180																						
RTH40	263	326	112	75	72	8	65	53	37.5	93	27.5	60	38	M5	30	16	25	M6	5	18	35	4	G1/4	M6
RTH63	306	377	138	90	82	10	75	75	42.5	110	30	70	56.5	M8	42	24	36	M8	6	27	45	5	G3/8	M8
RTH80	343	428	170	105	96	12	95	95	51.5	135	36	82	72	M8	50	28	45	M10	8	31	45	6	G3/8	M10

# TAN AIR

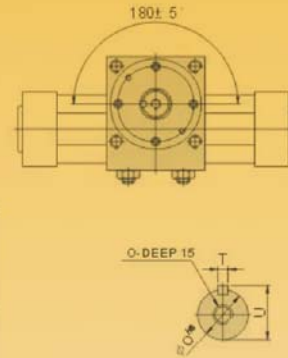
## ROTARY UNITS DIMENSIONS

### ● DIMENSION-RH-D

Angle of rotation 90



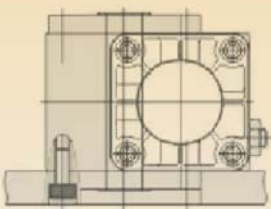
Angle of rotation 180



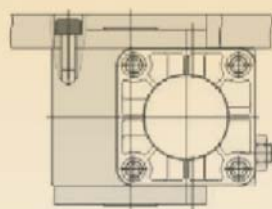
Type	A		C	D	E	F	G	H	J	K	L	M	N	O	P	Q	R	S	T	U	V	W	X	Z
	90	180																						
RTH40-D	263	326	143	75	72	8	65	53	37.5	93	27.5	60	38	M5	30	16	25	M6	5	18	35	4	G1/4	M6
RTH63-D	306	377	181	90	82	10	75	75	42.5	110	30	70	56.5	M8	42	24	36	M8	8	27	45	5	G3/8	M8
RTH80-D	343	428	221	105	96	12	95	95	51.5	135	36	82	72	M8	50	28	45	M10	8	31	45	6	G3/8	M10

### ● MOUNTING TYPE-RTF

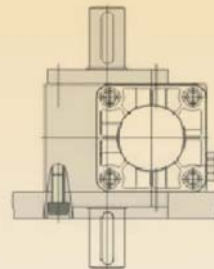
### ● MOUNTING TYPE-RTH. RTH-D



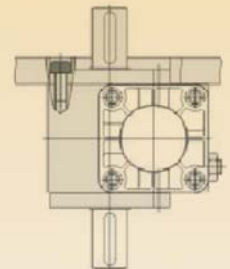
Bottom mounting



Top mounting



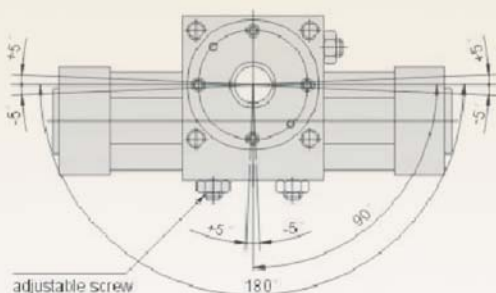
Bottom mounting



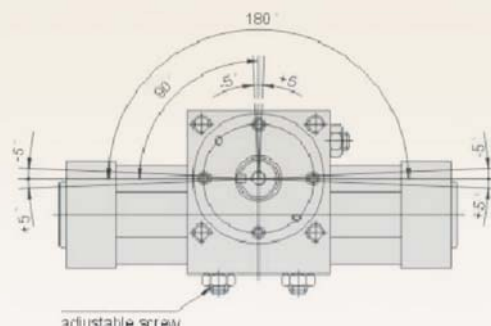
Top mounting

### ● ROTATING DIRECTION AND ADJUSTABLE ANGLE

RTF TYPE



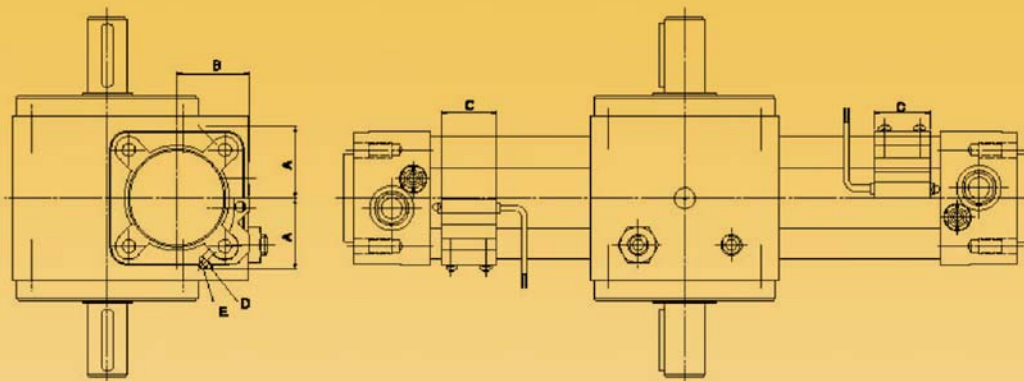
RTH RTH-D TYPE



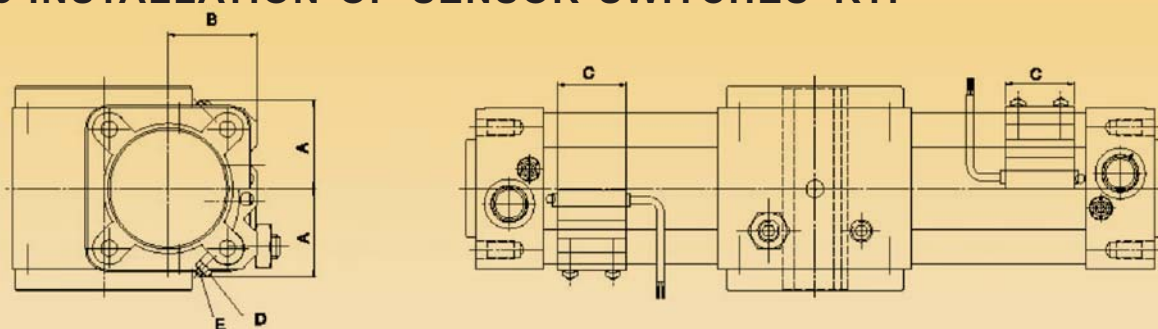
# TAN AIR

## ROTARY UNITS DIMENSIONS

### ● INSTALLATION OF SENSOR SWITCHES-RTH. RTHD



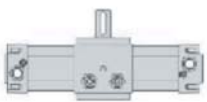
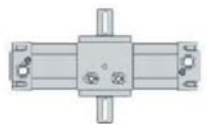
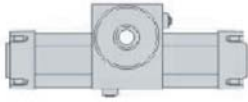

### ● INSTALLATION OF SENSOR SWITCHES-RTF



### ● DIMENSION FOR SENSOR MOUNTING BRACKET

Bore	A	B	C	E
40	29	32	32	M4
63	40	43	32	M4
80	49.5	52	32	M4

### ● WEIGHT

	RTH		RTH-D		RTF		Sensor switch
Bore Size (Φ)							
	90	180	90	180	90	180	
40	3.00	3.10	3.05	3.15	2.84	2.94	0.65
63	5.40	5.80	5.55	5.95	5.07	5.47	0.66
80	9.75	10.30	9.99	10.54	9.19	9.74	0.86