

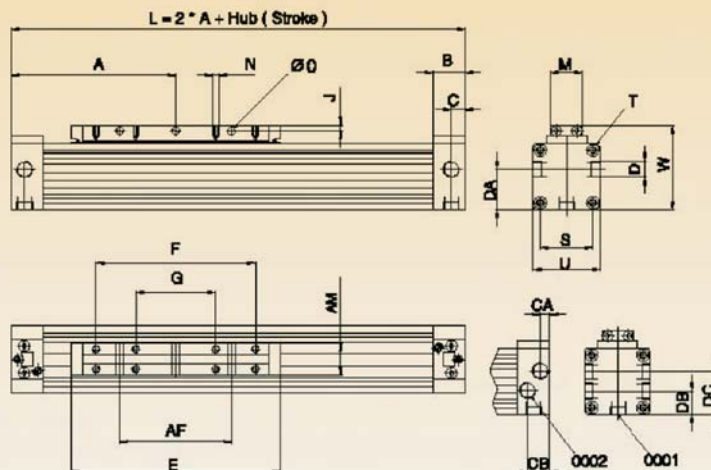
## RODLESS CYLINDER STANDARD DIMENSIONS



### ● ADVANTAGE

- The special features of the ZS standard type are the almost closed design and the front and side wipers that are fitted to the yoke. The side wiper is designed in such a way that it can compensate for additional loads that may act on the yoke.
- The cylinder tube is made of high strength, anodized aluminum extruded material and provided with grooves that allow various additional components to be fitted to the cylinder.
- The front side mounting brackets can be turned by 4x90° so that complicated forced deviation systems can be dispensed with.
- The rodless pneumatic cylinder range is rounded off by a variety of accessories comprising mounting brackets supports, center supports, solenoid switching systems, swinging bridges etc.
- The 0-stroke is virtually identical with other types of rodless pneumatic cylinder.
- The cylinder can be easily retrofitted with guide carriage to allow even heavier loads to be handled without any difficulties.
- ZS standard type are ideally suited to a variety of applications. As a rule, all linear movements can be performed; opening and closing of sliding doors or even very complex movement that are carried out in combination with additional handling equipment such as grippers, swing bridges etc.
- Owing to the increasing pressure on costs, the rodless pneumatic cylinders offered by us may be instrumental in implementing the inevitable automation and rationalization measures all branches of industry are forced to carry out.

### ● DIMENSION



ZS Standard type

Symbol Bore size	A	AF	AM	B	C	CA	CB	D	DA	DB	DC	E	F	G	J	M	N	O	S	T	U	W
Φ 18	80	50	10	16.5	6.5	---	---	M7x1/6	15.5	---	---	103	75	---	3	15.5	M3x8	3.5	23.5	M3x6	30	39
Φ 25	100	70	13	20	8.5	7	13	G1/8x8	25.5	14	28	131	100	50	3.5	20	M4x7	4.5	33	M4x7	42	53
Φ 32	120	100	16	20	8.5	7	13	G1/8x8	32	16	34.5	171	140	70	4.5	25	M5x9	5.5	41	M5x9	52	65
Φ 40	150	140	22	23	12	11	14.5	G1/4x12	37.5	18.5	41	220	180	90	5	33	M6x10	7	61	M8x10	63	78
Φ 50	180	180	29	23	12	12	14	G1/4x12	47.5	22.5	47.5	280	220	110	6.5	42	M8x12.5	7	63	M8x12.5	78	96
Φ 63	215	230	40	29	12.5	12.5	15.5	G3/8x12	59.5	24.5	59.5	333	280	140	8	54	M8x15	9	78	M8x15	93	114

# TANAIR

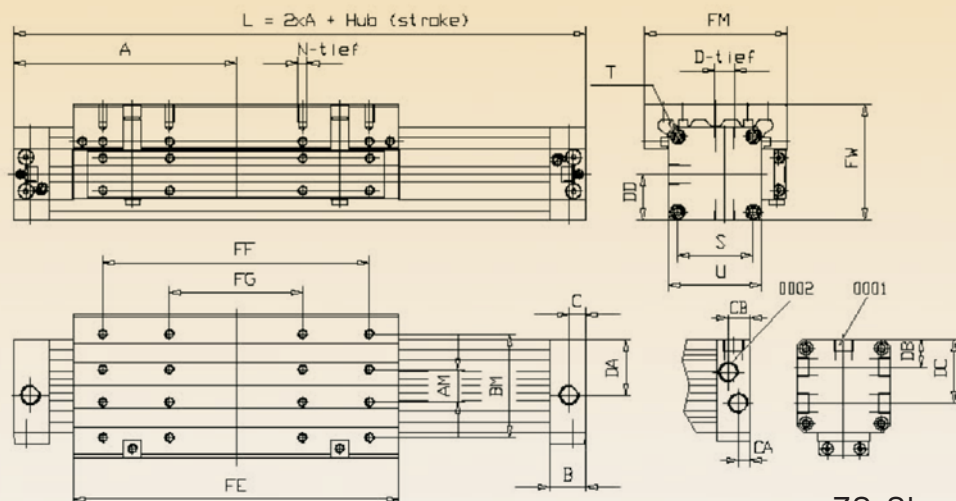
## RODLESS CYLINDER STANDARD DIMENSIONS

### ● ADVANTAGE



- ZF guiding type—optimum guiding precision and loading capacity.
- The ZF guiding type manufactured by us is characterized by the fact that the outer surface of the cylinder is provided with
- V-guide grooves which support the guide carriage by means of slide bars, thus allowing it to be moved in longitudinal direction.
- The guide carriage is fitted to the sides of the cylinder tube, this means that the increase of the stroke width has no influence and can almost be adjusted without backlash.
- As the guide grooves are integrated into the cylinder tube, the generally complicated and expensive installation of additional guide profiles is eliminated.
- The adjustable slide bars are made of high-strength plastic, in combination with the anodized surface of the cylinder, these plastic gibs ensure a very favorable sliding effect.
- This exceptionally compact and space-saving guiding cylinder generally allows additional separate guiding systems to be dispensed with.
- It goes without saying that suitable accessories such as lower end supports, center supports, solenoid switch systems and pendulum bridges etc. can be delivered upon request.
- But there is still more: by using cross supports, two guiding cylinders can be connected to form portal support systems with infinitely choose stroke. moreover, cylinder sizes can be combined 1:3, three systems are ideally suited to a variety of applications—from handling systems up to the linking of individual machines.
- The ZF guiding type is a highly versatile linear drive element which allows all designers and machine manufacturers to implement future-oriented concepts at reasonable prices.

### ● DIMENSION



ZS Standard type

Symbol Bore size	A	AF	B	BM	C	CA	CB	D	DA	DB	DC	DD	FE	FF	FG	FM	N	S	T	U
Φ 18	80	10	16.5	35	6.5	---	---	M7x1/6	17.5	---	---	15	103	75	---	50	M4x7.5	23.5	M3x7	30
Φ 25	100	13	20	45	8.5	7	13	G1/8x8	25.5	14	28	21	131	100	50	66	M4x8	33	M4x9	42
Φ 32	120	16	20	55	8.5	7	13	G1/8x8	32	17.5	34.5	26	171	140	70	80	M5x10	41	M5x10	52
Φ 40	150	22	24	70	11	9.5	14.5	G1/4x12	37.5	20	42	31.5	220	180	90	97	M6x12	51	M6x12	63
Φ 50	180	29	24	85	11	9.5	14.5	G1/4x12	47.5	26	52	39	280	220	110	116	M8x16	63	M8x12	78
Φ 63	215	40	30	105	14.5	11	18.5	G3/8x12	59.5	30	62	46.5	333	280	140	136	M8x16	78	M8x12	93

# TANAIR

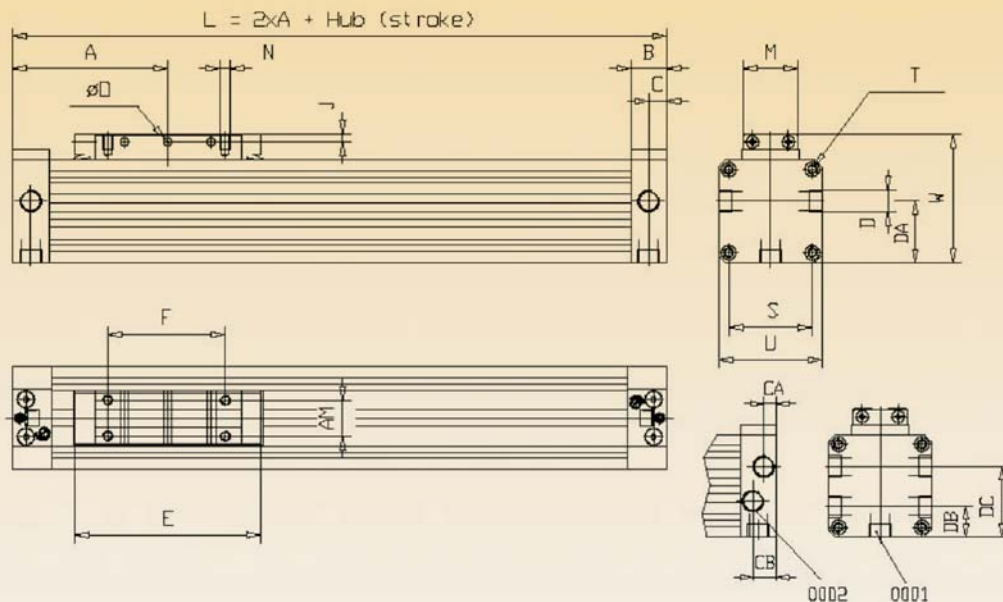
## RODLESS CYLINDER STANDARD DIMMENSIONS

### ● ADVANTAGE



- ZK short cylinder-economic driving of guided movements.
- The rodless pneumatic cylinder ZK is the clever drive also for guided movements by separate linear guides.
- At the same piston diameter the 0-stroke is up to 42% shorter than this of similar cylinders of the competitors.
- This means saving the expensive fitting place on one hand, or the possibility of fitting a bigger cylinder in order to get more action power on the other hand.
- At the same time this guided short cylinder ZK is not a 'lighter econormized version' but a fully suitable pneumatic cylinder with all usual functions.
- Due to shortened fitting length it grants both technical and economical advantages even in comparison with rod cylinders.
- There are advantages even on the cost side against the rod cylinder with additional guides, carriages or torsion protection.
- Space-saving also in comparison to short-stroke standard cylinders with piston rod.
- Shorter total fitting length.
- Money-saving compact construction.

### ● DIMENSION



ZS Standard type

Symbol Bore size	A	AM	B	C	CA	CB	D	DA	DB	DC	E	F	J	M	N	φ O	S	T	U
φ 18	57.5	10	16.5	6.5	---	---	M5x5.5	17.5	---	---	58	30	3	16	M3x6	φ 3.5	23.5	M3x7	30
φ 25	67.5	13	20	8.5	7	13	G1/8x8	25.5	14	28	66	35	3.5	20	M4x7	φ 4.5	33	M4x9	42
φ 32	77.5	16	20	8.5	7	13	G1/8x8	32	17.5	34.5	86	55	4.5	25	M5x9	φ 5.5	41	M5x10	52
φ 40	95	22	24	11	9.5	14.5	G1/4x12	37.5	20	42	110	70	5	33	M6x10	φ 7	51	M6x12	63
φ 50	105	29	24	11	9.5	14.5	G1/4x12	47.5	26	52	130	70	6.5	42	M8x12.5	φ 7	63	M8x12	78
φ 63	125	40	30	14.5	11	18.5	G3/8x12.5	59.5	30	62	153	100	8	54	M8x15	φ 9	78	M8x12	93