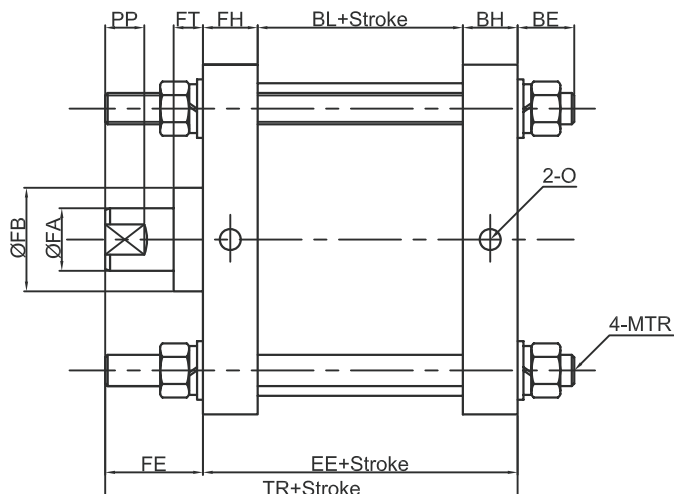
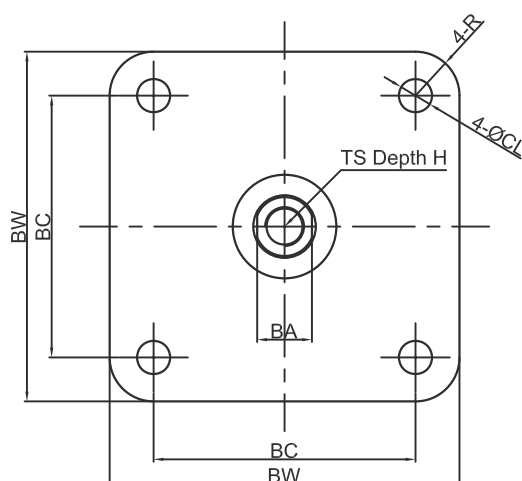


TAN AIR

EKGC MINING CYLINDER



BORE	EE	H	TR	FE	FH	FA	FB	PP	BC	MTR
100	95	40	152	40	24	20	39	15	84	M10*1.5
160	111	60	190	50	28	32	53	20	134	M16*2.0
200	122	60	231	80	33	40	58	20	163	M16*2.0
250	130	60	238	80	30	45	70	20	202	M20*2.5
300	136	60	255	85	33	50	78	20	250	M20*2.5
355	132	60	247	85	33	50	78	20	283	M20*2.5

BORE	BW	BA	R	BE	BH	BL	CL	O	TS
100	110	18	13	17	24	47	11	BSP 3/8"	M14*1.5
160	179	28	22.5	29	28	55	17	BSP 3/8"	M20*1.5
200	216	36	26.5	29	34	55	17	BSP 3/8"	M20*1.5
250	268	40	33	28	34	66	21	BSP 1/2"	M20*1.5
300	320	46	35	30	37	70	21	BSP 1/2"	M20*1.5
355	380	46	48.5	30	33	66	21	BSP 1/2"	M20*1.5